



# EMERGENCY SOCIAL SAFETY NET (ESSN)

## Conditional Cash Transfer for education (CCT-E)

**Ahmet Tunç Demirtaş**

Expert,  
*Foreign Affairs Office*  
Ministry of Family, Labour and  
Social Services

**TURKEY**





وَالَّذِينَ تَبَوَّؤُ الدَّارَ وَالْإِيمَانَ مِنْ قَبْلِهِمْ يُحِبُّونَ مَنْ هَاجَرَ  
إِلَيْهِمْ وَلَا يَجِدُونَ فِي صُدُورِهِمْ حَاجَةً مِمَّا أُوتُوا  
وَيُؤْتِرُونَ عَلَى أَنْفُسِهِمْ وَلَوْ كَانَ بِهِمْ خَصَاصَةٌ وَمَنْ يُوقِ  
شُحَّ نَفْسِهِ فَأُولَئِكَ هُمُ الْمُفْلِحُونَ

And [also for] those who were settled in al-Madinah and [adopted] the faith before them. **They love those who emigrated to them and find not any want in their breasts of what the emigrants were given but give [them] preference over themselves, even though they are in privation.** And whoever is protected from the stinginess of his soul - it is those who will be the successful.

Al-Hashr, 9





development  
initiatives | Global Humanitarian  
Assistance



global  
humanitarian  
assistance  
report 2018

According to the Global Humanitarian Assistance Report 2018, Turkey has continued to be the biggest donor country of the world in 2018 with an official humanitarian aid of 8.070 billion US Dollars.





## International Migration Outlook 2019

43RD EDITION



## 3.7 million Syrians in Turkey



## Implementing Stakeholders:



## Supported by:



## Funded by:



# Emergency Social Safety Net - ESSN



## What is ESSN ?

The ESSN is designed by DGSA, Turkish Red Crescent (TRC), World Food Program (WFP) and the EU Civil Protection and Humanitarian Aid Directorate General (ECHO) to deliver **cash assistance** to the most **vulnerable foreigners** living under Temporary or International Protection in Turkey and aims to allow refugees living outside of camps across Turkey to cover their basic needs such as food, shelter, clothes etc. in dignity, and is implemented through the **KIZILAYKART** platform.

## Budget of the Programme

ESSN is funded by the **ECHO (EU Civil Protection and Humanitarian Aid Operations)** and is implemented in a partnership between the **WFP, TRC and DGSA**. ESSN is the **highest budgeted humanitarian aid funded by the EU**. ESSN was contracted to WFP as pillars of ESSN I and ESSN II. ESSN II is budgeted until the end of March 2020 including Cost and Non-Cost Extensions. Beginning with April 2020 the contract with IFRC will start as ESSN III. ESSN I and ESSN II are under FRIT I with the budget of **998 million Euros**. ESSN III and ESSN IV will be under FRIT II with the allocation of **850 million Euros**.

## Beginning of the Programme

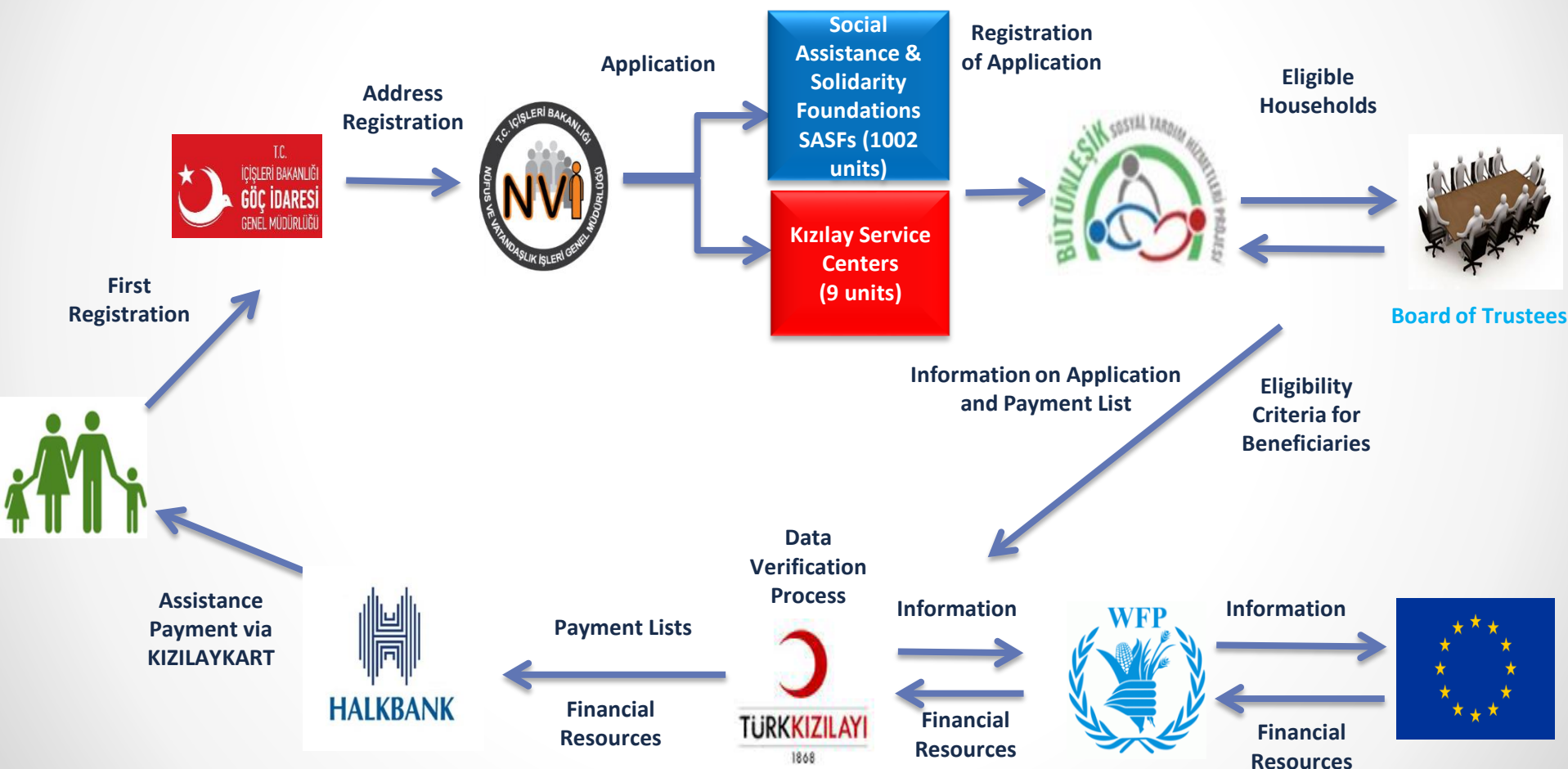
As of October 20th 2016, the ESSN Program module has been activated in the **Integrated Social Assistance Information System (ISAIS)**. Thereafter as of November 28, 2016, applications were received for the ESSN program throughout the country. The applications are received through the 1002 Social Assistance and Solidarity Foundations (SASFs) established in each province and district or through the TRC Service Center which are established in selected provinces/districts.





# Process Flow

In order to apply, applicants should follow below steps:



# Emergency Social Safety Net - ESSN







## Who can benefit?

Syrians and other foreigners who meet the following criteria:

- living outside the temporary accommodation centers,
- eligible in terms of assessment criteria,
- not having any family members with social security insurance,
- meeting at least one of the demographic criteria,
- having an ID starting with 99,
- having an address registration at MERNIS System.
- Meeting demographic criteria



# ESSN CRITERIA

Households matching the following criteria are eligible for assistance:



**Criteria number 1 - Single female**



**Criteria number 2 - Single parents with no other adults in the family and at least one child under 18**



**Criteria number 3 - Elderly people above 60 with no other adults (between 18 and 59) in the family**



**Criteria number 4 - Families with four or more children**



**Criteria number 5 - Families with one or more disabled people. They must have a disability of 40% or more, evidenced by a disability health board report from an authorised state hospital.**



**Criteria number 6 - Families that have a high number of 'dependents' (i.e. children, elderly and disabled). This is determined as families that have at least 1.5 dependents for every able bodied adult (between 18 and 59).**



## Payment Amount

- In the first place, **1 million** Syrian refugees under temporary protection was planned to benefit with **100 TL per person**. As of June 2017, the number of beneficiaries and the number of the assistance was revised and 1 million targets have been raised to **1.3 million** and the amount of 100 TL per people has been increased to **120 TL** per month.
- The assistance is based on vulnerability assessment and delivers regular and monthly **120 TL per beneficiary**, with periodic top-ups (every 3 months) through the KIZILAYKART.

## TopUp Amount

Being carried out first time in August 2017, additional payments are made every 3 months. As of September 2019, additional payments are ;

- Household size 1-4 person; **600 TL**,
- Household size 5-8 person; **300 TL**,
- Household size 9+ people; **100 TL**

Payments are made per household.

# Additional Payment for Severe Disabled Individuals



- An additional payment to the beneficiaries of **severe disabilities** under the ESSN Program was commenced in **July 2018**.
- Within the framework of the program, a monthly payment of **600 TL** is made to the beneficiaries of ESSN who have a **severe disability report**.
- In this context, beneficiaries who have a up-to-date health report where the disability rate is **50% or over** and is signed as severe disable are included.
- As of **August 2019, 7.636 beneficiaries** were paid as part of the additional payment.



## Social Assistance and Solidarity Fund

### SASF Allowance

- Within the scope of SASF Allowance; it is aimed that the most needy part of the foreigners who are **excluded from the ESN assistance** because they can not meet the **criteria of ESN** (based on household composition), may be assessed as eligible to receive the assistance by the SASFBoard of Trustees.
- The number of households that can be assisted in this category will be very limited and only the **most vulnerable** households will be prioritized.
- As part of ESN the 'SASF Allowance' was launched in **November 2018**.
- As a quota, **5%** of the number of **ESN applications** made through the SASF was defined for each SASF.
- As of August 2019, **4.556 households (18.429 individuals)** benefited from the SASF Allowance.

# Current Situation



Number of  
ESSN  
Beneficiaries

- **~1.7 million** people  
August 2019



Number of  
Severe  
Disabled  
People

- **7.458** people  
(August 2019)

Total Payment  
Amount of ESSN

- **~4.6 billion TL**  
(August 2019)  
(790 mil. USD)

Number of  
ESSN  
Households

- **288.283**  
(August 2019)

Number of  
SASFs  
Allowance

- **4.556** Households  
• **18.429** people  
(August 2019)

Number of  
ESSN  
Applicants

- **288.283**  
(August 2019)





## Strong IT Infrastructure

- The programme, which has been operating through Integrated Social Assistance Service Information System since 2009 ensures **automation, transparency, full control, accountability and simultaneous automatic registration**.
- **No printed documents** are requested from applicants and beneficiaries.
- Online data are obtained from related institutions.
- Human errors are minimized.

## Geographical Coverage

- Access of all beneficiaries to the Assistance Programme is ensured as applications can be made in **every province and district**.

## Rapid Increase of the Scope

- Since it is a widely applied programme in many regions and it has a strong IT infrastructure, new components can **quickly be developed and implemented**.
- The rules of the programme can be swiftly amended and executed.

## Preparedness for Shocks and Capability to Respond Quickly

- The Programme is flexible enough to **respond quickly to sudden shocks** thanks to its wide geographic coverage and strong infrastructure.

## Experience in Responding Mass Migration

- Historically, Turkey has experienced large influxes of mass migration.
- Thanks to its open-door policy, the migrants can live **within host communities** rather than camps aiming to ensure their integration into society.
- A specific registration system aiming at migrants has been developed.



## Director General of Migration Management / DGMM

- In order to benefit from the programme, people applied to DGMM and got their 99's ID cards.

## The Central Civil Registration System / MERNİS

- In order to benefit from the programme, the people declared their current address.

## The Mobility of people

- With the introduction of the programme, the movement of the refugees has been reduced.

## Demographic Data

- With the programme, the demographic information on foreign nationals, families and households accessed

# Conditional Cash Transfer – Education



## CCT-E Programme Partners

### Implementing Stakeholders:



### Supported by:



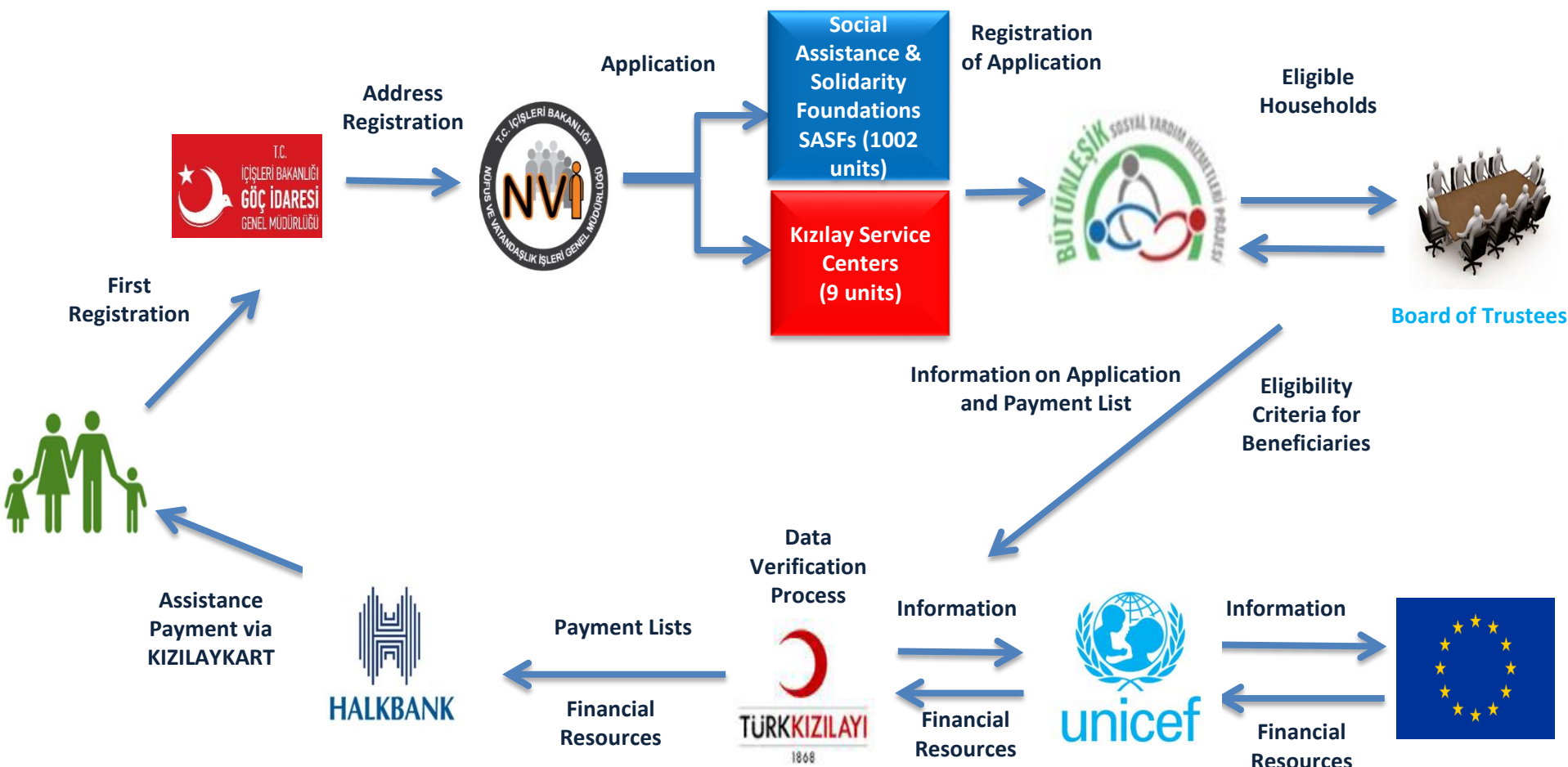
### Funded by:





# Process Flow

In order to apply, applicants should follow below procedures:



# CCTE Program & its Extension to Foreigners

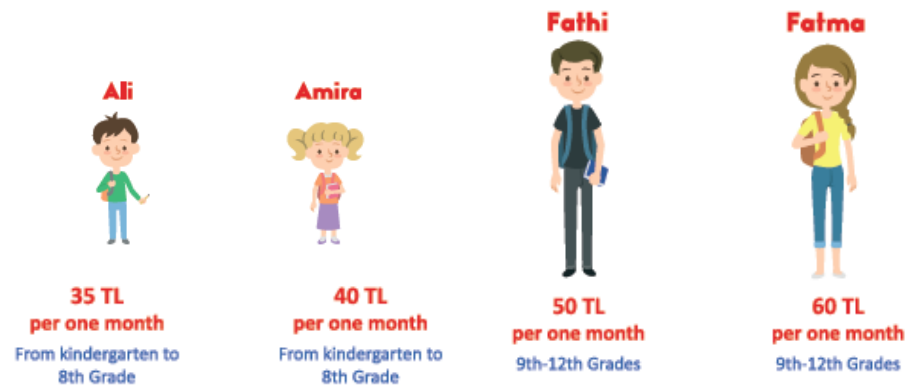
- CCTE is a **national social assistance** program being implemented by the Ministry of Family, Labor and Social Services (MoFLSS) since 2003
- Applications for the CCTE program are accepted through Social Assistance Solidarity Foundations (**1003 SAFs in total -in each province and district of Turkey**)
- The **objective** of the program is to **improve school attendance** (and enrollment for foreigners)
- Condition of the program: monthly school attendance of **80% or more** is required for payment eligibility in any month (attendance checked from MoE database)



ATTENDANCE MATTERS

## Background: CCTE Program & its Extension to Foreigners

- Extension of the CCTE program to **Syrians and other refugees** is being implemented through a partnership between MoFSP, MoNE, the Turkish Red Crescent (TRC) & the United Nations Children's Fund (UNICEF)
- Extension of the CCTE program to **Syrians and other refugees** is being funded by EU's Directorate General for European Civil Protection and Humanitarian Aid Operations (ECHO)
- Payments to beneficiaries are made on **bi-monthly basis** (Jan, Mar, May, Jul, Sep, Nov) conditional on regular school attendance (**at least 80%** of open school days) as per the following individual entitlements:



**Plus 100 TL/semestre for each student.**



# Current Situation



Number of  
CCTE  
Beneficiaries

- **517.877**  
people  
(July 2019)  
(*Cumulative*)

Number of  
CCTE  
Current

- **474.976**  
(September 2019)

Total  
Payment  
Amount of  
CCTE

- **~300 mil. TL / 51 mil. USD**  
(July 2019)

## What are the eligibility criteria for the CCTE?

**Application is open to all families regardless of their nationality.**

The eligibility criteria are the **same** for every applicant, as follows:

- All members of the family must be **registered** in Turkey;
- The family must **not** have any **regular income** at the time of application (including no high value or income-generating assets);
- No member of the family must have **social security**; and
- The family must have at least one **school-going child** at the time of application.

# CCTE for Accelerated Learning Programme (ALP) Learners

- MoNE has launched an Accelerated Learning Programme (ALP) for children aged 10-18 years who have been out of school for more than 3 years. (Non-Syrians can also apply.)
- Children can benefit from the ALP programme for 4 to 16 months (i.e. from 1 to 4 four-month modules) depending on their learning needs for (re)integration into school.
- Children enrolled in ALP have been eligible to apply for the CCTE programme as of mid-August 2018. The number of ALP Learners received CCTE payment reached to 1,838 after July 2019 payment.

**Khalid**



**Khalid is an Accelerated Learning Programme Learner.**

If Khalid attends Accelerated Learning Programme regularly, the support will be

**60 TL per month**  
for modules A, B, C, and D

**Amal**



**Amal is an Accelerated Learning Programme Learner.**

If Amal attends Accelerated Learning Programme regularly, the support will be

**60 TL per month**  
for modules A, B, C, and D

- Implementation of ALP is carried out by Public Education Centers in 12 provinces.



# Announcement:

**1<sup>st</sup> OIC MINISTERIAL CONFERENCE ON SOCIAL DEVELOPMENT**

**7-9 December 2019, İstanbul/TURKEY**



**ORGANISATION OF  
ISLAMIC COOPERATION**

Thank you...

[ademirtas@ailevecalisma.gov.tr](mailto:ademirtas@ailevecalisma.gov.tr)