



# **BANTEN POTENCIES CHALLENGES AND OPPORTUNITIES**

by:

**DR. H. WAHIDIN HALIM  
BANTEN GOVERNOR**



- ✓ GEOSTRATEGIC POSITION
- ✓ OPPORTUNITIES WIDELY
- ✓ LEADING IN INVESTMENT REALIZATION
- ✓ DECENT INFRASTRUCTURES & ESTATES

**KNKS EXECUTIVE LEADERS FORUM  
Jakarta, November 13 2019**



# BANTEN PROFILE

Banten is one of the provinces in Indonesia, which is geographically located in the west of Java Island. The area of Banten Province consists of land and waters (sea), with diverse landscapes, varied natural resources, and society that is a blend between traditional and modern cultures.

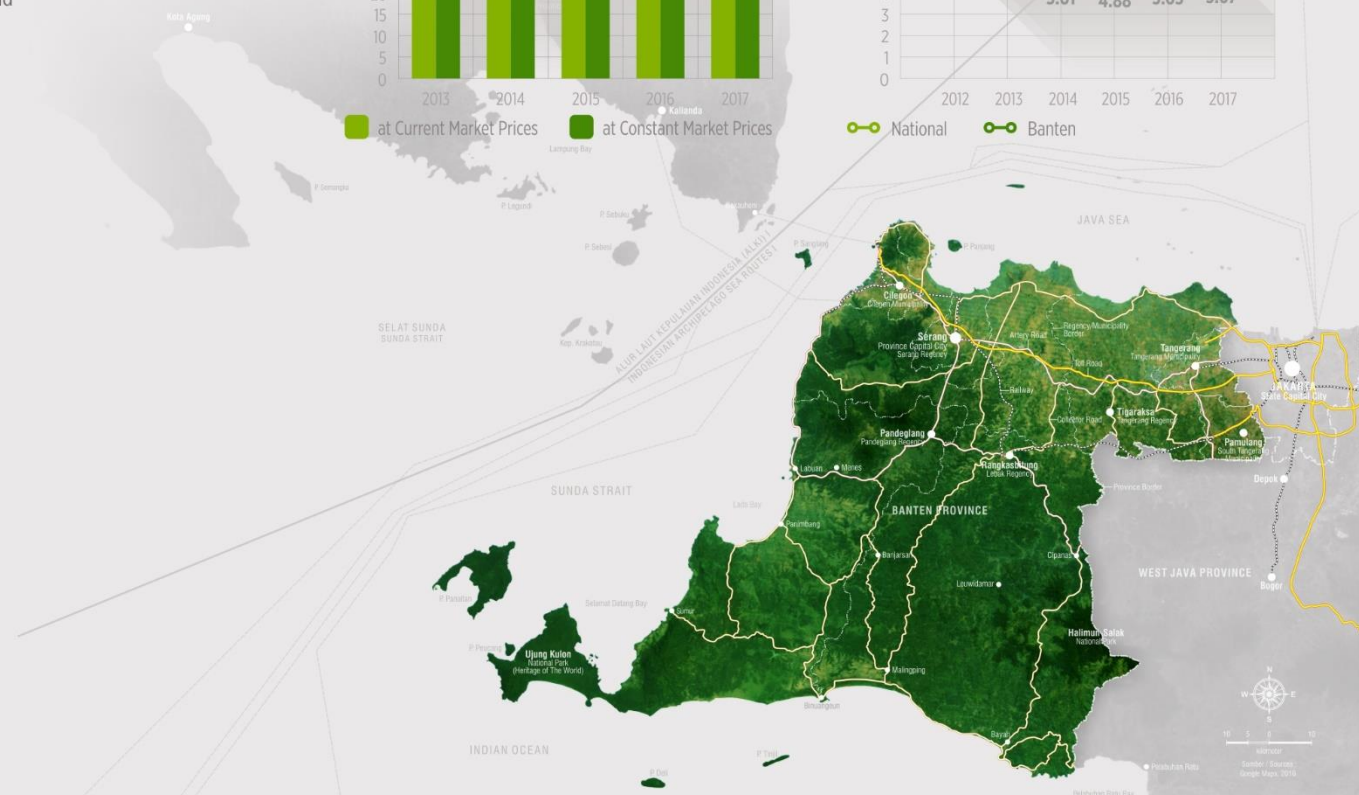
Province Name	<b>Banten</b>
State/Country	<b>Indonesia</b>
Capital City	<b>Serang</b>
Sub Region	<b>4 Regencies, 4 Municipalities</b>
Geographic Located	<b>05°07'50" - 07°01'01" S 105°01'11" - 106°07'12" E</b>
Land Area	<b>9,662.92 km<sup>2</sup></b>
Marine Area	<b>11,134.22 km<sup>2</sup></b>
Coastline	<b>509 km</b>
Small Island	<b>55 Islands</b>
Population	<b>12,448,160 Person</b>
Household	<b>3,052,774 Family</b>
GRDP Current Price	<b>US\$ 41.66 Billion</b>
GRDP Constant Price	<b>US\$ 30.26 Billion</b>



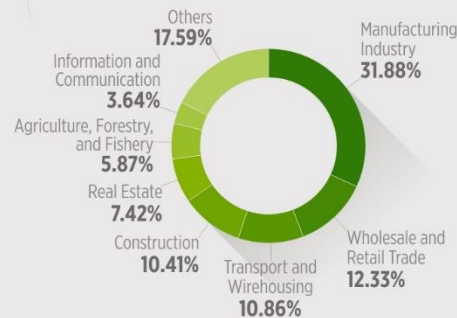
## GDP / Regional Income



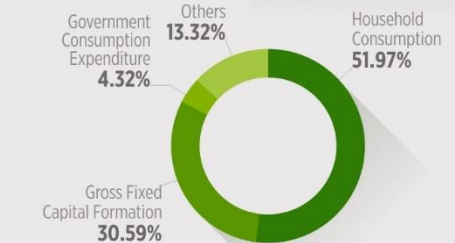
## Growth Rate of GDP



## GDP by Industry



## GDP by Expenditure





BANTEN  
G O L D

## GEOSTRATEGIC POSITION

History has recorded that Banten's strategic geographical position makes it one of the important centers of civilization in Indonesia since ancient times. Reflection of Banten's current geostrategic position represents its superiority over the easy access to resources, markets, and services, which are at least marked by 3 things, as follows:

### 01 The Buffer Region of the State Capital

Banten is the buffer region for Jakarta - which is the heart of government and the national economy. This makes various services and affairs related to investment which deals with Jakarta will be effective and efficient in its implementation

### 02 Access to The National Market

Indonesia with 259 million population is a big potential market, where the major concentration of the population distribution is 62,1% in Java Island and 16,2% in Sumatera Island, while Banten is the connecting node between these two large islands

### 03 Access to The International Networks

Banten has direct access to the Indonesian Archipelagic Sea Lines (ALKI) I, to the north has a tendency to the Asia Pacific region and America, while to the west has a tendency to the region of West Asia, the Middle East, Africa, Europe, and Australia.



1724: The Blueprint of Banten by Francois Valentijn who had been to Banten in 1694. From the book entitle, "Valentijn, Beschrijving van Groot Djava, ofte Java Major, Amsterdam, 1796". Ludwig Bachhofer, India Antiqua (1947: 280)



# OUR INFRASTRUCTURE

## 1. 13 National Strategic Infrastructure Project → Perpres 56 Tahun 2018)

## 2. Central Activities

### National Activities

1. Perkotaan Kota Tangerang
2. Perkotaan Kota Tangerang Selatan
3. Perkotaan Kabupaten Tangerang
4. Perkotaan Kota Cilegon
5. Perkotaan Kota Serang
6. Perkotaan Kabupaten Serang



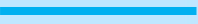
### Regional Activities

1. Perkotaan Pandeglang
2. Perkotaan Rangkasbitung

### New Promoted Regional Activities

1. Panimbang
2. Maja
3. Bayah

## 3. Road

-  JALAN TOL
-  JALAN NASIONAL
-  JALAN PROVINSI

## 4. Toll Road

### EKSISTING JALAN TOL

- 001 . Tol Tangerang – Merak
009. Tol Sedyatmo

### RENCANA JALAN TOL

002. Tol Serang – Panimbang
003. Tol Balaraja – Teluknaga – Bandara Soekarno Hatta (Lingkar Utara)
004. Tol Serpong – Balaraja
005. Tol Serpong – Cinere
006. Tol Kunciran – Serpong,
007. Tol Kamal – Teluk Naga – Rajeg
008. Tol Cengkareng – Batu ceper – Kunciran
- 010 Bojong Gede – Balaraja

## 5. Terminal

### TERMINAL TIPE A

1. Pondok Cabe Kota Tangerang Selatan
2. Poris Plawad Kota Tangerang
3. Terminal Terpadu Merak Kota Cilegon
4. Pakupatan Kota Serang
5. Kadubanen Kabupaten Pandeglang
6. Kaduagung Kabupaten Lebak (blm)
7. Balaraja Kabupaten Tangerang (blm)
8. Labuan Kabupaten Pandeglang (blm)
9. Malingping Kabupaten Lebak (blm)
10. Cikupa Kabupaten Tangerang (blm)
11. Cikande Kabupaten Serang (blm)

### TERMINAL TIPE B

1. Pasar Badak Kabupaten Pandeglang
2. Bayah Kabupaten Lebak (blm)
3. Ciputat Kota Tangerang Selatan
4. Cadas Kota Tangerang (blm)
5. Jatiuwung Kota Tangerang
6. Tanara Kabupaten Serang (blm)
7. Cibeber /Seruni Kota Cilegon (blm)
8. Palima Kota Serang (blm)

## 6. Rail Way

- ### Rencana Pembangunan
- 001 Tonjong – Pelabuhan Bojonegara
  - 002 Merak – Bandara Soekarno - Hatta
  - 003 Cilegon – Anyer Kidul – Labuan – Panimbang

- ### Eksisting
- 004 Merak – Cilegon – Serang – Rangkasbitung
  - 005 Rangkasbitung – Serpong

- ### Reaktivasi
- 006 : Rangkasbitung – Labuan
  - 007 : Saketi-Malimping-Bayah

# Our Infrastructure

## 7. Seaport

### Main

1. Pelabuhan Banten (Ciwandan)

### Feeder

1. Merak
2. Warnasari (blm, baru lahan & amdal)

### Regional Feeder

1. Pelabuhan Labuan
2. Pelabuhan Anyer Lor

### Local Feeder

1. Pelabuhan Bayah (blm)
2. Pelabuhan Muara Binuangen (blm)
3. Pelabuhan Panimbang (blm)
4. Pelabuhan Genyang- Puloampel (blm)
5. Pelabuhan Pasauran (blm)
6. Pelabuhan Pulo Panjang –Puloampel
7. Pelabuhan Tanjung Leneng (blm)
8. Pelabuhan Terate (blm)
9. Pelabuhan Pulotunda-Tirtayasa
10. Pelabuhan Lontar Pontang (blm)
11. Pelabuhan Muara Dadap

### Promoted Local Feeder

1. Pelabuhan Cituis
2. Pelabuhan Kronjo

## 8. Airport

2. Lapangan Terbang Pondok Cabe
3. Bandar Udara Khusus Militer Gorda
4. Bandar Udara Khusus Pendidikan dan Pelatihan Budiarto

5. Rencana Bandar Udara Banten Selatan (blm)
6. Rencana Bandar Udara Cihara (blm)
7. Rencana Bandar Udara Maja (blm)

## 10. Water Network System

- 001 : Waduk Krenceng
- 002 : Waduk Sindang Heula
- 003 : Bendung Pamarayan
- 004 : Waduk Tanjung
- 005 : Waduk Cilawang
- 006 : Bendung Ranca Sumur

- 007 : Waduk Karian
- 008 : Waduk Pasir Kopo
- 009 : Bendung Pasar Baru
- 010 : Bendung Ciliman
- 011 : Bendung Cibaliung

## 9. Power Network System

### Pembangkit Listrik Tenaga Uap (PLTU) :

1. Pengembangan PLTU 1 Suralaya di Kota Cilegon;
2. Pengembangan PLTU 2 Labuan di Kab. Pandeglang;
3. Pengembangan PLTU 3 Lontar Exp di Kab. Tangerang ;
4. Rencana pembangunan PLTU Jawa 5 di Kab. Tangerang (blm);
5. Rencana pembangunan PLTU Jawa 7 di Kab. Serang;
6. Rencana pembangunan PLTU Jawa 9 di Kota Cilegon (blm);
7. Rencana pembangunan PLTU di Kab. Lebak

### Pembangkit Listrik Tenaga Lainnya :

1. Rencana pembangunan Pembangunan Listrik Tenaga Gas dan Uap/Mesin Gas Peaker Jawa-Bali di Kota Cilegon (blm);
2. Rencana pembangunan Pembangkit Listrik Tenaga Bayu di Kab. Pandeglang dan Kab. Lebak (blm);
3. Pengembangan PLTD di Kab. Serang;
4. Pengembangan PLTP Kaldera Danau Banten di Kab. Pandeglang dan Kab. Serang (blm)
5. Rencana pengembangan PLTP di Gunung Endut Kab. Lebak (blm);
6. Pengembangan pembangkit listrik PLTMH di Kab. Lebak dan Kab. Serang (blm)

### Energi Listrik Baru Terbarukan (EBT):

1. Rencana pengembangan EBT Energi Hidro, Energi Biomassa, Energi Gelombang dan Energi angin di Kab. Pandeglang;
2. Rencana pengembangan EBT berupa Energi Hidro, Energi Biomasa dan Energi Angin di Kabupaten Serang;
3. Rencana pengembangan Energi Baru Terbarukan (EBT) Biomasa di 5 TPA (Kab. Tangerang, Kab. Serang, Kota Tangerang, Kota Tangerang Selatan, dan Kota Cilegon

## 11. FISH SEAPORT

### B. Local Fish Seaport

1. PPP. Labuan
2. PPP. Citarate

### C. National Fish Seaport

1. PPN. Karangantu

### A. Fish Station

#### KOTA CILEGON

1. PPI. Cilegon

#### KABUPATEN PANDEGLANG

2. PPI. Banyuasih
3. PPI. Carita
4. PPI. Cikeusik
5. PPI. Citerep
6. PPI. Panimbang
7. PPI. Sidamukti
8. PPI. Sukanagara
9. PPI. Sumur
10. PPI. Tamanjaya

#### KABUPATEN SERANG

11. PPI. Anyer
12. PPI. Domas
13. PPI. Kepuh
14. PPI. Lontar
15. PPI. Pasauran
16. PPI. Pulau Panjang
17. PPI. Pulokali
18. PPI. Tengkurak
19. PPI. Terate
20. PPI. Wadas

#### KABUPATEN LEBAK

21. PPI. Bayah
22. PPI. Binuangen
23. PPI. Cibareno
24. PPI. Panyauangan
25. PPI. Pulomanuk
26. PPI. Sawarna
27. PPI. Sukahujan
28. PPI. Tanjung panto

#### KABUPATEN TANGERANG

29. PPI. Cituis
30. PPI. Dadap
31. PPI. Ketapang
32. PPI. Kronjo
33. PPI. Mauk Barat
34. PPI. Tanjung Pasir



# BANTEN GOLD

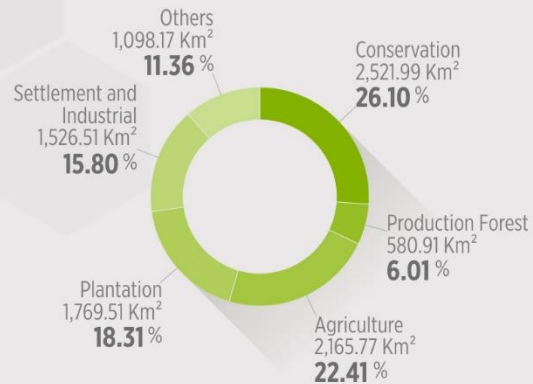
## OPPORTUNITIES WIDELY

Investment opportunities are open to a broad business field. According to the business field, including agriculture, plantations, livestock, fisheries, tourism, industry, transportation, information and communication, energy, construction, real estate, trade and services. The opportunity according to the area of business covers both land and waters, as well as urban and rural areas. Overall, business opportunities in Banten are open to extractive, non-extractive and facilitative types of business, in accordance with the established spatial utilization policy.



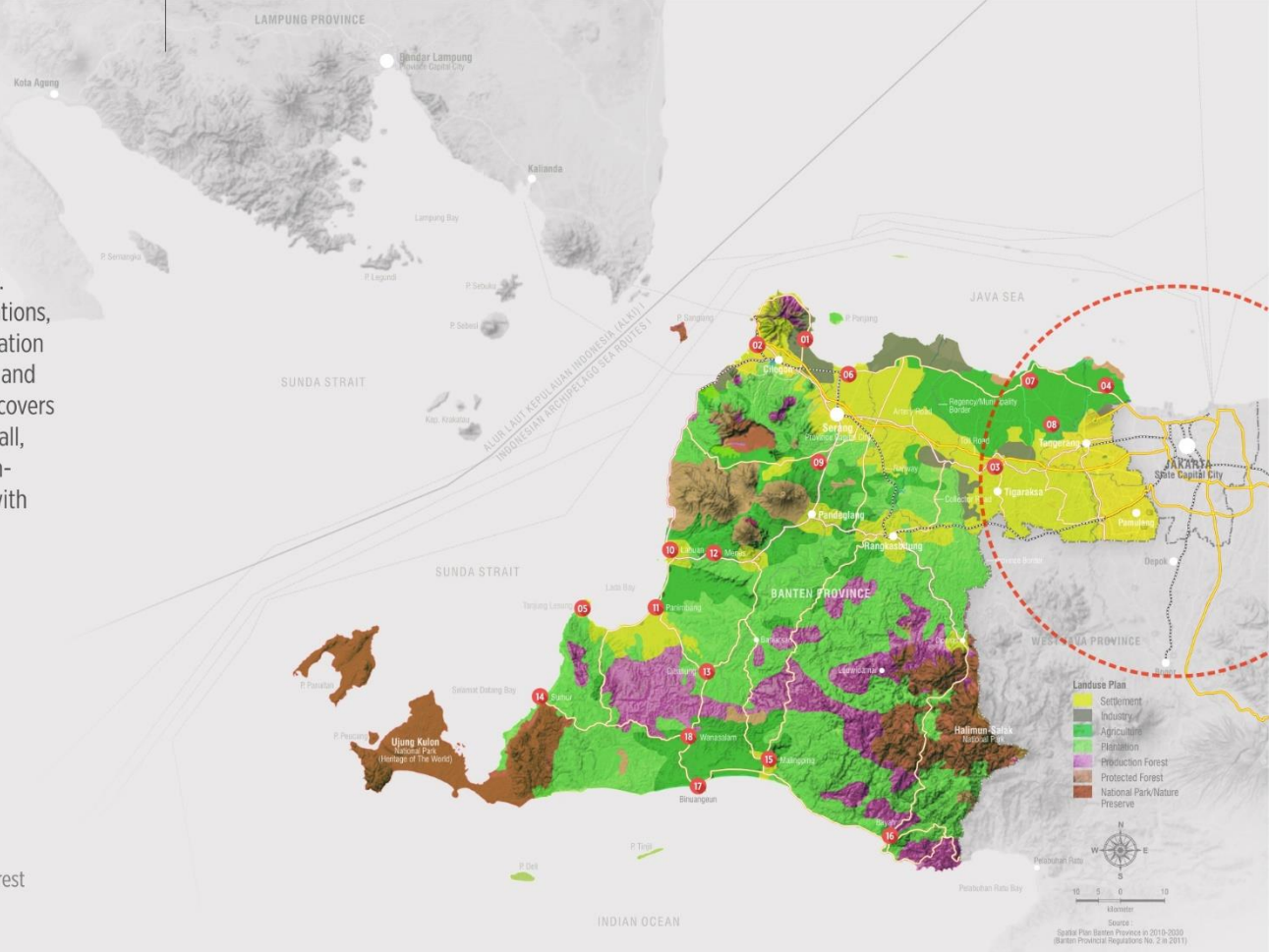
### Provincial Spatial Plan

Banten Provincial Regulation No. 02/2011



### Superior Commodities

Ton / Year



### Strategic Economic Area

- 01 Bojonegara | Industrial and Port Area
- 02 Krakatau Cilegon | Industrial and Port Area
- 03 Balaraja | Industrial Area
- 04 Teluk Naga | Industrial Area
- 05 Tanjung Lesung | Marine Tourism Area
- 06 Karangantu | Fisheries and Tourism Area
- 07 North Tangerang | Fisheries Area
- 08 Sepatan | Agro-Industrial Area
- 09 Baros | Agro-Industrial Area
- 10 Labuan | Agro-Industrial and Port Area
- 11 Panimbang | Fisheries and Tourism Area
- 12 Menes | Agro-Industrial Area
- 13 Cibaliung | Agro-Industrial Area
- 14 Sumur | Fisheries and Ecotourism Area
- 15 Malingping | Agro-Industrial and Tourism Area
- 16 Bayah | Agro-Industrial and Tourism Area
- 17 Binuangun | Fisheries and Port Area
- 18 Wanasalam | Agro-Industrial Area

### Megapolitan Area

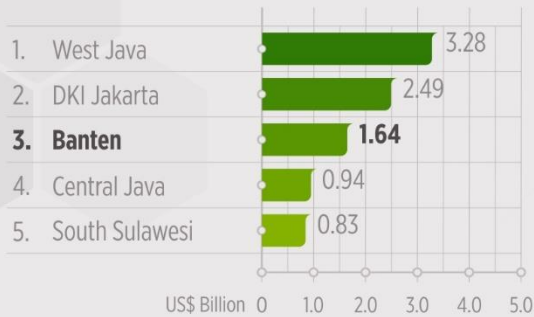
- 0 Megapolitan of Jabodetabek, is a national strategic area with economic interests, referred to as the world's second largest megapolitan with 30 million inhabitants after Tokyo and Yokohama with a population of 37 million. Third ranking of Shanghai and New York, which reaches 20 million people.

# BANTEN GOLD

## LEADING IN INVESTMENT REALIZATION

During the period of 2013-2017, Banten was always ranked in the top 5 investment realization by the province nationally, with a total of 9,934 projects worth US \$18.05 billion, including investment in all sectors, through domestic and foreign investment with the involvement of more than 50 countries. As for the first half of 2018, the investment realization in Banten ranked it to be in the third of 34 provinces. Overall, Banten is a very popular investment destination

### Top 5 Investment Realization by Province in Indonesia in The First Half of 2018



### Realization of Investment Values



### Realization of Investment Projects

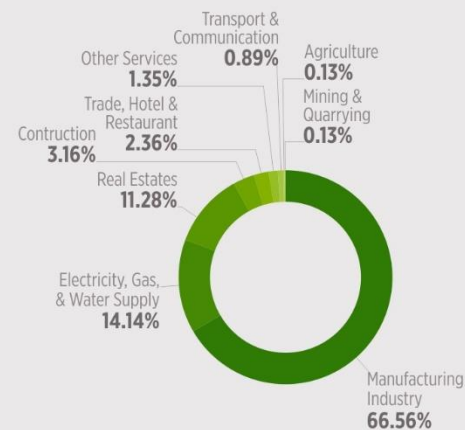


Municipality/Regency	Realization Investment 2013-2017 (US\$ Billion)	Foreign Investment (US\$ Billion)	Domestic Investment (US\$ Billion)
Cilegon Municipality	6.91	5.71	1.19
Serang Municipality	0.86	0.83	0.03
Tangerang Regency	4.34	2.90	1.44
Tangerang Municipality	1.33	0.95	0.38
South Tangerang Munic.	0.45	0.41	0.04

Regency	Realization Investment 2013-2017 (US\$ Billion)	Foreign Investment (US\$ Billion)	Domestic Investment (US\$ Billion)
Pandeglang Regency	0.06	0.00	0.06
Serang Regency	3.20	0.60	2.61

Regency	Realization Investment 2013-2017 (US\$ Billion)	Foreign Investment (US\$ Billion)	Domestic Investment (US\$ Billion)
Lebak Regency	0.91	0.84	0.07

### Realization of Foreign Investment by Sectors 2013-2017



### Realization of Foreign Investment by Country 2013-2017





# DECENT INFRASTRUCTURES & INDUSTRIAL ESTATES

Another advantage that Banten has compared to other provinces in Indonesia is the existence of national vital infrastructure and regional infrastructure in numbers, types and capacities that tend to be superior. In addition, the readiness of a number of industrial estates scattered in several locations can be relevant alternatives to various business considerations used. In reality, it is the feasibility of the infrastructures and industrial estates that has provided great confidence to investors to invest in Banten.



## Vital Infrastructures

Location | Information

- Soekarno-Hatta International Airport**  
Tangerang Municipality | The busiest and most advanced Indonesian airport; Total capacity of about 623,420 flights/year, 62 million passengers/year, 600,000 ton cargo/year
- Tanjung Priok International Port**  
Jakarta, about 60 minutes from Serang | The busiest and most advanced Indonesian seaport; Total Capacity of about 8 million TEUs
- Merak Mas National Port**  
Cilegon Municipality | Total capacity of about 5 million tons
- Ciwandan National Port**  
Cilegon Municipality | Total capacity of about 5 million tons
- Cigading National Port**  
Cilegon Municipality | Total capacity of about 20 million tons
- Karangantu National Fishing Port**  
Serang Municipality | Total capacity of about 20 ton/day
- Suralaya Power Plant**  
Cilegon Municipality | Steam power plant with the largest capacity in Indonesia, total capacity of about 4,025 MW
- Lontar Power Plant**  
Tangerang Regency | Steam power plant, total capacity of about 945 MW
- Labuan Power Plant**  
Pandeglang Regency | Steam power plant, total capacity of about 600 MW

**HALAL INDUSTRIAL CLUSTER, AVAILABLE 500 HA**



## Industrial Estates

Industrial Estates | Location | Area | Available Land

- Krakatau Industrial Estate Cilegon**  
Cilegon Municipality | 625 hectares | 380 hectares
- Panca Puri Industrial Estate**  
Cilegon Municipality | 100 hectares | - hectares
- PT. Cipta Niaga Internasional**  
Cilegon Municipality | 22 hectares | 20 hectares
- Jababeka Industrial Estate**  
Serang Regency | 1,800 hectares | - hectares
- Nikomas Gemilang Industrial Estate**  
Serang Regency | 300 hectares | 220 hectares
- Modern Cikande Industrial Estate**  
Serang Regency | 3,175 hectares | 2,075 hectares
- Langgeng Sahabat Industrial Estate**  
Serang Regency | 500 hectares | 453 hectares
- Pancatama Industrial Estate**  
Serang Regency | 150 hectares | 80 hectares
- Samanda Perdana Industrial Estate**  
Serang Regency | 150 hectares | 150 hectares
- Saur Industrial Estate**  
Serang Regency | 250 hectares | 50 hectares
- MGM Cikande Integrated Industrial Estate**  
Serang Regency | 662 hectares | 662 hectares
- Wilmar Integrated Industrial Estate**  
Serang Regency | 1,744 hectares | 800 hectares
- Balaraja Industrial Park**  
Tangerang Regency | 300 hectares | 300 hectares
- Balaraja Industrial Estate**  
Tangerang Regency | 300 hectares | 278 hectares
- Cikupa Mas Industrial Estate**  
Tangerang Regency | 250 hectares | 150 hectares
- West Tangerang-Cikupa Industrial Estate**  
Tangerang Regency | 500 hectares | 350 hectares
- Graha Balaraja**  
Tangerang Regency | 76 hectares | 23 hectares
- Pasar Kemis Industrial Park**  
Tangerang Regency | 80 hectares | - hectares
- Tekno Park Industrial Estate**  
South Tangerang Munic. | 200 hectares | 100 hectares
- Millenium Industrial Estate**  
Tangerang Regency | 240 hectares | 200 hectares
- Sawarna Integrated Bussines Park**  
Tangerang Regency | 102 hectares | 40 hectares



# PROJECT DIGEST & INVESTMENT SPECIAL POLICY

## 01 Direct Construction Investment Service and 3 Hours Investment Licensing Services

KLIK (Ease of Direct Investment Construction) service policy and I23J (3 Hour Investment Permit) in certain industrial areas. Through the KLIK service, it is enough to own principle licenses, investors can directly carry out construction work in parallel while completing other investment permits. The I23J services are given to the investors in industrial fields with the minimum investment value criteria of Rp. 100 billion and/or employment of at least 1.000 people.

- Project Location :
1. **Modern Cikande Industrial Estate**  
Serang Regency | Available 1.800 hectares
  2. **Wilmar Integrated Industrial Estate**  
Serang Regency | Available 800 hectares
  3. **Krakatau Industrial Estate Cilegon**  
Cilegon Municipality | Available 570 hectares
  4. **Millenium Industrial Estate**  
Tangerang Municipality | Available 200 hectares

Scope of Project : Manufacturing Industry.

Government Role : Assisting in the licensing and land procurement process.

## 02 The Construction of the Special Economic Area of Tanjung Lesung

Special Economic Area (KEK) of Tanjung Lesung is an integrated tourism area, launched by the Indonesian Government in 2012, located in Pandeglang district (170 km from Jakarta) facing directly to the Sunda Strait. With a total area of 1,500 hectares, the area offers natural beauty and cultural heritage due to its location adjacent to the Ujung Kulon National Park and Child of Krakatoa. Tanjung Lesung was proclaimed to be an international tourist destination that is able to attract one million tourists per year.

Project Location : **Panimbang District**, Pandeglang Regency.

- Scope of Project :
1. **The Facilities, Accommodation and Tourism Business** : the construction of hotel/resort/residential, marina, education centre, medical centre, etc.
  2. **Panimbang Airport (South Banten)** : the construction of the airport, including its completeness of the facilities in an area of 257 hectares.

Government Role : Assisting in the implementation/process of business feasibility studies; overseeing the implementation of the project in accordance with the Masterplan

## 03 Strategic Infrastructure Development

This project is based on the Banten Province Spatial Plan (RTRW) 2010-2030, aimed at realizing the function and economic value of regional space. In this project, a 3-Hour Investment Permit (I23J) for the Infrastructure Sector was given to the investors without criteria for investment value or employment.

- Location & Scope of Project :
1. **The Construction of Bojonegara Port**, in Serang Regency, designed to handle containers and cargo from Banten, West Java and Tanjung Priok Port (Jakarta). The scope of the project is to build the port and its facilities (dry bulk terminals, liquid bulk terminals, container terminals, multi purposes terminals and industrial areas);
  2. **The Construction of Cilegon-Bojonegara Highway**, from Serdang (Cilegon city) to Bojonegara (Serang regency) throughout 15,965 kilometers with a width of 60 meters, along with its complete facilities;
  3. **The Construction of Serang-Panimbang Highway**, from Walantaka (Serang regency) to Panimbang (Pandeglang district) throughout 83 kilometers along with its facilities (flyover, bridge, gate, etc.). Intended to increase access from and to the KEK of Tanjung Lesung.

Government Role : Assisting in the licensing and land procurement process; and Overseeing the implementation of the project in accordance with the Masterplan.

## 04 Online Single Submission (OSS)

OSS exists in the framework of business licensing services that apply in all Ministries, Institutions, and Local Governments throughout Indonesia. OSS is a business license issued by the OSS Institution for and on behalf of ministries, institutional leaders, governors, or regents/mayors to the businessman through an integrated electronic system.

### Conditions of the Issuance of Location Permits Automatically :

1. The business location is located in the location of the special economic area, industrial area, free trade area and free port;
2. The business location land is the land that has been controlled by another company that has obtained a Location Permit and will be used by the businessman;
3. The land of the business location originates from the authority or the organizing body for the development of an area in accordance with the spatial plan of the development area;
4. The land of the business location is needed for the expansion of the business that has been running and the location of the land is bordered by the relevant business location;
5. The land of the business location needed to implement the Business Permit plan is not more than: 25 ha for agricultural businesses; 1 ha for non-agricultural businesses; and 5 ha for housing construction for low-income communities;
6. The land of the business location that will be used for the national strategic projects.

### Conditions of the Issuance of Waters Location Permits Automatically :

1. The location of the business and/or the activity is located in the location of the special economic area, industrial area, and free trade area and free port;
2. The location of the business and/or the activity is the location that has been controlled by another company that has obtained a Water Location Permit and will be used by the Businessman;
3. The location of the business and/or the activity originates from the authority or the organizing body for the development of an area in accordance with the spatial plan of the development area;
4. The location of the businesses and/or the activities used by micro businesses and small businesses;
5. The location of the business and/or the activity that will be used for the national strategic projects.

## INVESTMENT POTENTIAL WHICH IS BASED ON THE INTERNATIONAL MARKETS AND WHICH HAS POTENTIAL OF SPACE SUPPORT POWER IN BANTEN PROVINCE

Is the investment potential that already has market share in the international world so that prospective investors can mitigate their market share, not having to start with introducing products to the market

# BANTEN INVESTMENT PROFILE & GDP GROWTH



*Note: Investment in Trilyun Rupiah, source BPS and BKPM*

# INVESTMENT POTENTIAL WHICH ALREADY HAS ITS INTERNATIONAL MARKET SHARE

Data Source: Ministry of Commerce for Quarter One Period 2018 (in Million US\$)

Negara	Tekstil dan Produk Tekstil
Amerika Serikat	2.253
Jepang	567
RRC Tiongkok	402
Korea Selatan	317
Turki	276
Jerman	256
Uni Emirat Arab	122
Brazil	122
Inggris	112
Belgia	109

Negara	Karet dan Produk Karet
Amerika Serikat	818
RRC Tiongkok	317
Jepang	448
India	229
Korea Selatan	134
Jerman	93
Brazil	89
Kanada	75
Turki	86
Malaysia	45

Negara	Elektronik
Singapura	899
Amerika Serikat	483
Jepang	375
Hongkong	221
Jerman	240
Belanda	126
RRC Tiongkok	134
Thailand	166
Malaysia	127
Korea Selatan	146

Negara	Alas Kaki
Amerika Serikat	690
RRC Tiongkok	234
Belgia	208
Jepang	176
Jerman	130
Inggris	84
Belanda	83
Korea Selatan	83
Italia	70
Meksiko	53

# INVESTMENT POTENTIAL WHICH ALREADY HAS ITS INTERNATIONAL MARKET SHARE

Data Source: Ministry of Commerce for Quarter One Period 2018 (in Million US\$)

Negara	Otomotif
Philipina	888
Thailand	460
Jepang	285
Saudi Arabia	223
Vietnam	155
Malaysia	214
Meksiko	80
Singapura	88
Pakistan	94
Brazil	80

Negara	Udang
Amerika Serikat	569
Jepang	151
RRC Tiongkok	35
Vietnam	7
Hongkong	12
Malaysia	13
Inggris	4
Taiwan	12
Singapura	8
Kanada	6

Negara	Kulit dan Produk Kulit
RRC Tiongkok	6
Vietnam	6
Hongkong	8
India	6
Malaysia	2
Italia	2
Singapura	3
Philipina	2
Taiwan	1
Thailand	1

## INVESTMENT POTENTIAL WHICH IS BASED ON POTENTIAL OF RAW MATERIALS AND SPACE SUPPORT POWER IN BANTEN PROVINCE

Is the investment potential which is based on the ability of the region to fulfill its raw materials.

PETA RENCANA PENGEMBANGAN JALAN SERANG RAYA

- Multimoda:**
1. Ciruas
  2. Bogeg
  3. Boru
  4. Sport Centre
  5. Untirta Baru
  6. Kopassus
  7. Kramatwatu
  8. Tonjong
  9. Karangantu

- TOD:**
1. Bogeg
  2. Palima UIN Baru
  3. Sport Centre
  4. Untirta Baru
  5. Banten Lama

- LAND MARK**
1. Bogeg
  2. Boru
  3. Palima
  4. Sport Centre
  5. Untirta Baru
  6. Banten Lama

**Fase 1**  
2020-2025  
 Bogeg-Sindangheula

**Fase 2**  
2025-2030  
 Bogeg-Tonjong

**Fase 3**  
2030-2035  
 Sindangheula-Tonjong



Est



# Regency / City Profile

## Kota Cilegon

- GDP Rp.66.534,36 (billion)
- GDP Growth 5,86%
- Area 175,50KM<sup>2</sup>
- Density 2,422 person/KM<sup>2</sup>

## Serang Regency

- GDP Rp.49.154,56 (billion)
- GDP Growth 5,48%
- Area 1.734,28 KM<sup>2</sup>
- Density 861 person/KM<sup>2</sup>

## Pandeglang Regency

- GDP Rp.17.876,03 (billion)
- GDP Growth 5,51%
- Area 2,746,89 KM<sup>2</sup>
- Density 439 person/KM<sup>2</sup>

## Lebak Regency

- GDP Rp.18.788,27 (billion)
- GDP Growth 5,91%
- Area 3,426,56 KM<sup>2</sup>
- Density 376 person/KM<sup>2</sup>

## Serang City

- GDP Rp.20.139,30 (billion)
- GDP Growth 6,99%
- Area 266,71 KM<sup>2</sup>
- Density 2,499 person/KM<sup>2</sup>

## Tangerang Regency

- GDP Rp.86.937,80 (billion)
- GDP Growth 5,93%
- Area 1,011,86 KM<sup>2</sup>
- Density 3,543 person/KM<sup>2</sup>

## Tangerang City

- GDP Rp.101.280,31 (billion)
- GDP Growth 6,10%
- Area 153,93 KM<sup>2</sup>
- Density 13,902 person/KM<sup>2</sup>

## Tangerang Selatan City

- GDP Rp.52.213,98 (billion)
- GDP Growth 7,97%
- Area 147,19 KM<sup>2</sup>
- Density 11,175 person/KM<sup>2</sup>



# Economic Profile (Sectoral Dominance)

## Cilegon City

- 61,69% Industry
- 11,68% Trading
- 06,26% Real Estate
- 06,20% Construction

## Serang Regency

- 50,38% Industry
- 09,28% Construction
- 09,16% Trading
- 08,91% Agriculture

## Pandeglang Regency

- 32,19% Agriculture
- 12,63% Trading
- 08,44% Mining
- 08,35% Real Estate

## Lebak Regency

- 26,20% Agriculture
- 13,54% Trading
- 10,21% Industry
- 07,68% Construction

## Serang City

- 29,70% Trading
- 10,02% Real Estate
- 06,28% Accommodation
- 05,77% Communication

## Tangerang Regency

- 39,02% Industri
- 12,57% Sanitation
- 11,44% Trading
- 08,10% Real Estate

## Tangerang City

- 36,91% Industri
- 16,34% Transportation
- 12,77% Trading
- 07,81% Communication

## Tangerang Selatan City

- 18,38% Real Estate
- 16,84% Trading
- 15,85% Communication
- 13,43% Construction



# IDEAL INVESTMENT POTENTIAL WHICH IS DEVELOPED IN BANTEN

## 1) Cilegon City (Petrochemical Industry)

- petrochemical Industry upstream : industri C-1, olefin dan aromatik.
- petrochemical Industry intermediate : industri turunan dari petrokimia hulu seperti etilen glikol, alkil benzen, etil benzen, pthalik anhidrid, PTA, dsb.
- petrochemical Industry downstream: industri yang menghasilkan produk yang dimanfaatkan oleh industri pengguna akhir, seperti industri plastik, serat sintetis, dsb.

## 2) Serang Regency and Tangerang Regency

- Komponen Elektronika/Semikonduktor (PCB, Transistor, Kapasitor, Resistor)
- Kabel
- Bahan Plastik/Karet
- Kemasan Plastik/Kertas

## 3) Serang Regency and Tangerang Regency (Motorized Vehicle Transport Equipment) Serang

- Stamping Panel Body
- Forging/Casting Engine
- Forging.Casting Transmisi
- Axle
- Steering System
- Komponen Universal

# IDEAL INVESTMENT POTENTIAL WHICH IS DEVELOPED IN BANTEN

## 4) Serang City /Tangerang City and South Tangerang City (Telematics)

- Software/Aplikasi

## 5) Lebak Regency or Pandeglang Regency (Agro-Coconut)

- Virgin Oil
- Minyak Goreng
- Bio Dessel
- Nata de Coco
- Asam Cuka
- Santan Bubuk
- Coco Fiber
- Karbon Aktif
- Bahan Bangunan
- Perabot Rumah
- Kaerajinan (Hand Craft)

## 6) Lebak Regency or Pandeglang Regency (Marine-Industry)

- Pendinginan Ikan
- Pembekuan Ikan
- Pengalengan Ikan
- Hasil Sampingan dan Pemanfaatan Limbah

# TOURISM AREA

Gambar 3.4

## KAWASAN PENGEMBANGAN PARIWISATA PROVINSI BANTEN

### Legenda :

-  Ibukota Provinsi
-  Pusat Kabupaten/Kota
-  Pusat Kecamatan
-  Batas Provinsi
-  Batas Kabupaten/Kota
-  Jalan Tol
-  Jalan Nasional
-  Jalan Provinsi
-  Jalan Kabupaten
-  Rel Kereta
-  Sungai
-  Danau/Situ
-  Kawasan Pengembangan Pariwisata

Sumber : RIPPDA Provinsi Banten, 2004



1. TANGERANG CITY TOURISM AREA
2. PANDEGLANG CITY TOURISM AREA
3. NORTH SERANG TOURISM AREA
4. CIOMAS TOURISM AREA
5. BANTEN ISLAND TOURISM AREA
6. TIGARAKSA TOURISM AREA
7. SOUTH TANGERANG TOURISM AREA
8. SERANG CITY TOURISM AREA
9. RANGKASBITUNG TOURISM AREA
10. NORTH TANGERANG TOURISM AREA
11. SERANG – CILEGON BEACH TOURISM AREA
12. UJUNG KULON TOURISM AREA
13. SUMUR BEACH TOURISM AREA
14. WEST PANDEGLANG BEACH TOURISM AREA
15. CENTRAL LEBAK TOURISM AREA
16. SOUTH LEBAK TOURISM AREA
17. LEUWIDAMAR TOURISM AREA
18. SAWARNA TOURISM AREA

# EXCITING BANTEN

## BANTEN 7 WONDERS

wonderful indonesia 



 @visitbanten.id

 visitbanten

 @visitbanten\_id

# BUFFERZONE KEK TANJUNG LESUNG



**HATUR NUHUN**  
**(THANK YOU)**

**Dr. H. Wakidun Halim, M.Si**  
Gubernur Banten

**H. Andika Hazrumy, S.Sos., M.AP.**  
Wakil Gubernur Banten